



# SS INSTITUTE OF PHARMACY

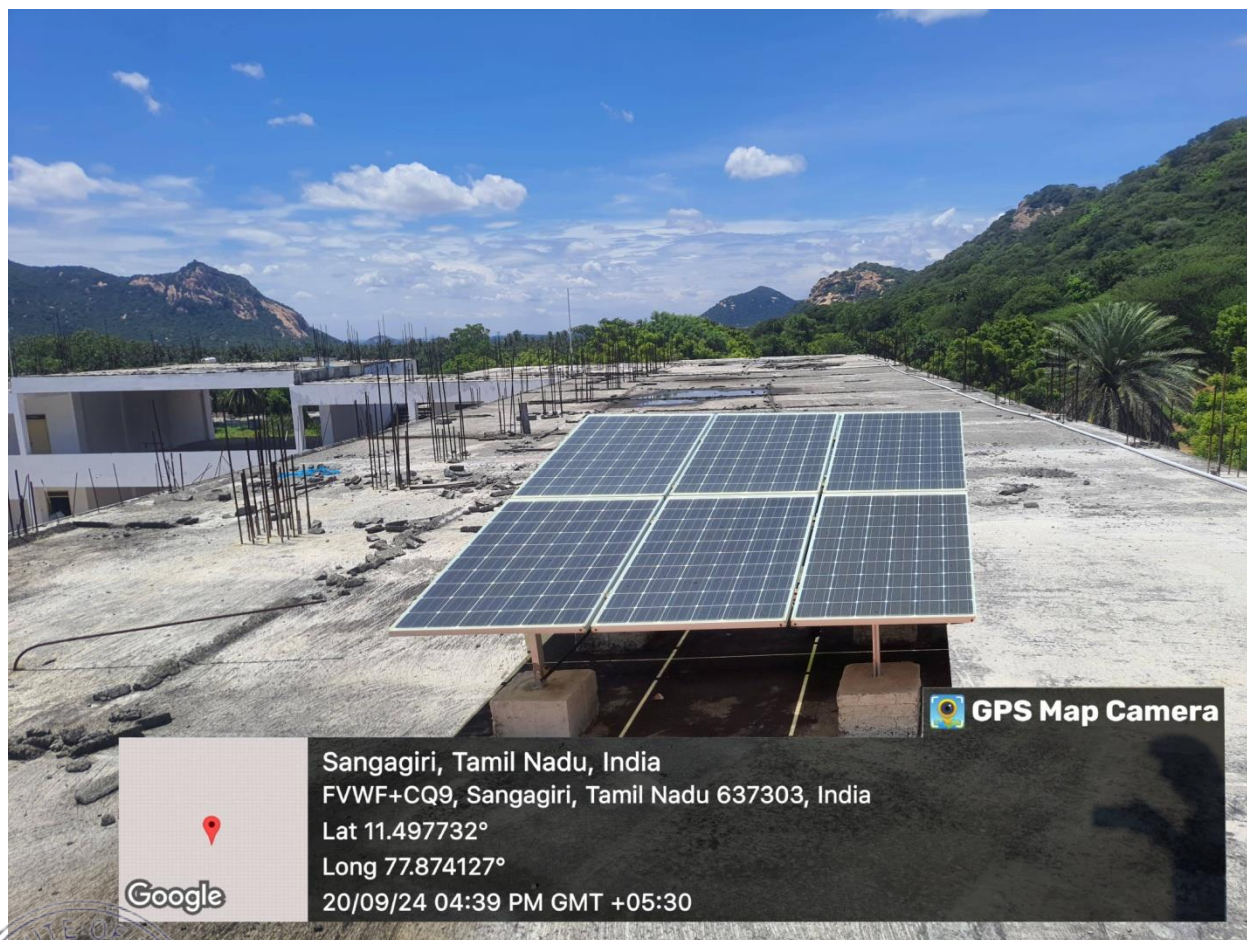
(A unit of VS Educational & Charitable Trust)

Approved by Tamilnadu Government & Pharmacy Council of India, New Delhi.  
Affiliated to the Tamilnadu Dr. M.G.R. Medical University,  
and The Directorate of Medical Education, Chennai.

## 4. Brief report of the facility provided

### SOLAR POWER PLANT

SS Institute of Pharmacy has taken significant steps to shift towards renewable energy by installing a solar rooftop plant with a capacity of 2 kW in 2023. This system supplies uninterrupted power, greatly reducing the institution's energy costs. It is designed to function seamlessly, even at night, as it is integrated with hybrid inverters and charge controllers that manage battery storage. This setup ensures continuous power supply, making it a sustainable and efficient solution for the institute's energy needs.



*[Signature]*  
**PRINCIPAL.**  
**SS INSTITUTE OF PHARMACY.**  
**KUPPANUR (PO), SANKARI (TK).**  
**SALEM - 637001**





# SS INSTITUTE OF PHARMACY


(A unit of VS Educational & Charitable Trust)

Approved by Tamilnadu Government & Pharmacy Council of India, New Delhi.  
Affiliated to the Tamilnadu Dr. M.G.R. Medical University,  
and The Directorate of Medical Education, Chennai.

## GREEN CAMPUS INITIATIVES

In line with its commitment to sustainability, SS Institute of Pharmacy is actively working towards becoming a Green Institution by enhancing the campus's green cover. The institute has introduced various herbal plants and established a dedicated herbal garden, alongside planting fruit trees to optimize land usage. The garden also features local tree species, which contribute to cooling the campus during the hot summer months, while improving the overall environment and ambiance. This initiative reflects the institute's focus on eco-friendly practices and environmental stewardship



  
**PRINCIPAL.**  
**SS INSTITUTE OF PHARMACY.**  
KUPPANUR (PO), SANKARI (TK),  
SALEM - 637 404, India



# SS INSTITUTE OF PHARMACY


*(A unit of VS Educational & Charitable Trust)*

Approved by Tamilnadu Government & Pharmacy Council of India, New Delhi.  
Affiliated to the Tamilnadu Dr. M.G.R. Medical University,  
and The Directorate of Medical Education, Chennai.

## RAINWATER HARVESTING

SS Institute of Pharmacy employs a rainwater harvesting system to maintain groundwater supply. Rainwater is collected through the wide pipes in the campus, with collection pits constructed to meet industry standards. Rainfall is funneled through wide, shallow ditches that extends & promoting effective rainwater conservation. All open terraces feature rainwater collection pipes that lead to designated drains. Additionally, drainage from the entire building is directed to the lower floor via an external drain.



  
**PRINCIPAL.**  
**SS INSTITUTE OF PHARMACY.**  
**KUPPANUR (PO), SANKARI (TK).**  
**SALEM - 637 004**