



SS INSTITUTE OF PHARMACY

(A unit of VS Educational & Charitable Trust)

Approved by Tamilnadu Government & Pharmacy Council of India, New Delhi.
Affiliated to the Tamilnadu Dr. M.G.R. Medical University,
and The Directorate of Medical Education, Chennai.


2. (A). ALTERNATIVE ENERGY SOURCES AND ENERGY CONSERVATION MEASURES

Ensuring energy and environmental conservation is essential for long-term sustainability. SSIP is committed to environmental and energy consumption policies that aim to conserve resources through efficient energy use, benefiting both people and the environment. The college has implemented several strategies to effectively harness solar energy, utilising its unique infrastructure.

Firstly, the college's design maximizes natural light, thereby reducing the need for artificial lighting in classrooms and laboratories during daylight hours. Additionally, various measures have been introduced to minimize power consumption across the campus. These include installing a grid-connected solar rooftop panel system with a 3 kW capacity and automatic solar lighting. A biogas plant has also been set up behind the hostel. To further conserve electricity, the college employs LED and sensor-based lighting and fans.

SSIP partially transitioned from conventional energy sources to renewable ones by installing a 3 kW solar rooftop plant. This installation has provided a reliable power supply and substantially lowered energy costs for the institute.




PRINCIPAL.
SS INSTITUTE OF PHARMACY,
KUPPANUR (PO), SANKARI (TK),
SALEM - 637301



SS INSTITUTE OF PHARMACY

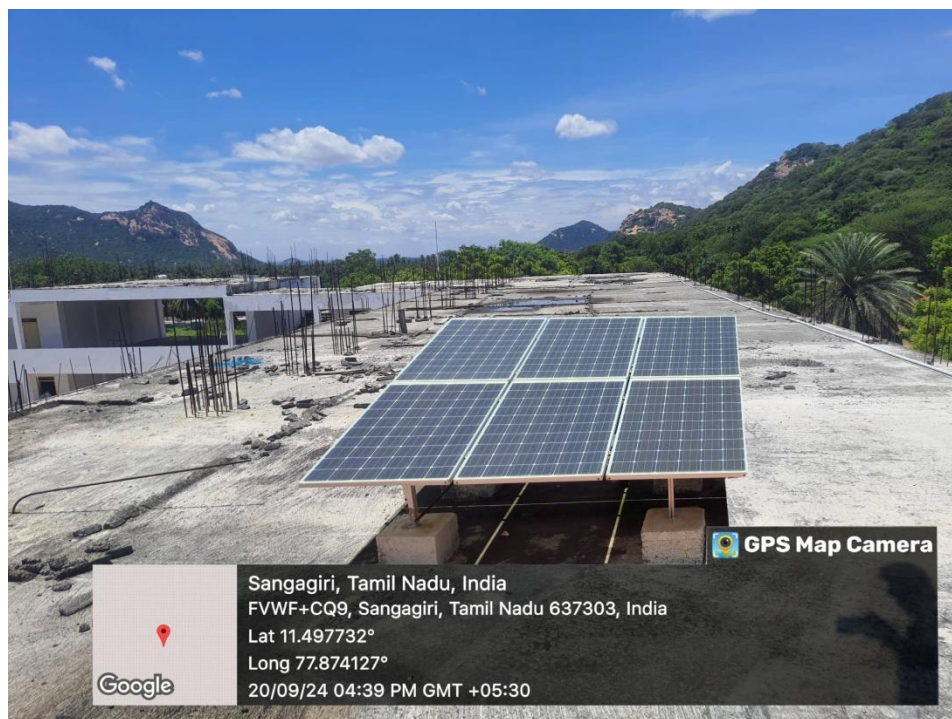
(A unit of VS Educational & Charitable Trust)

Approved by Tamilnadu Government & Pharmacy Council of India, New Delhi.
Affiliated to the Tamilnadu Dr. M.G.R. Medical University,
and The Directorate of Medical Education, Chennai.

1. SOLAR PLANT

SS Institute of Pharmacy has partially transitioned from conventional energy to renewable sources. SS Institute of Pharmacy installed a 3 kW solar rooftop system, which provides a reliable power supply and has significantly lowered energy costs.

It can continuously support these loads at night due to its hybrid inverters and integrated charge controllers that manage the batteries.



Solar rooftop plant at college

[Signature]
PRINCIPAL,
SS INSTITUTE OF PHARMACY,
KUPPANUR (PO), SANKARI (TK),
SALEM - 637301



SS INSTITUTE OF PHARMACY

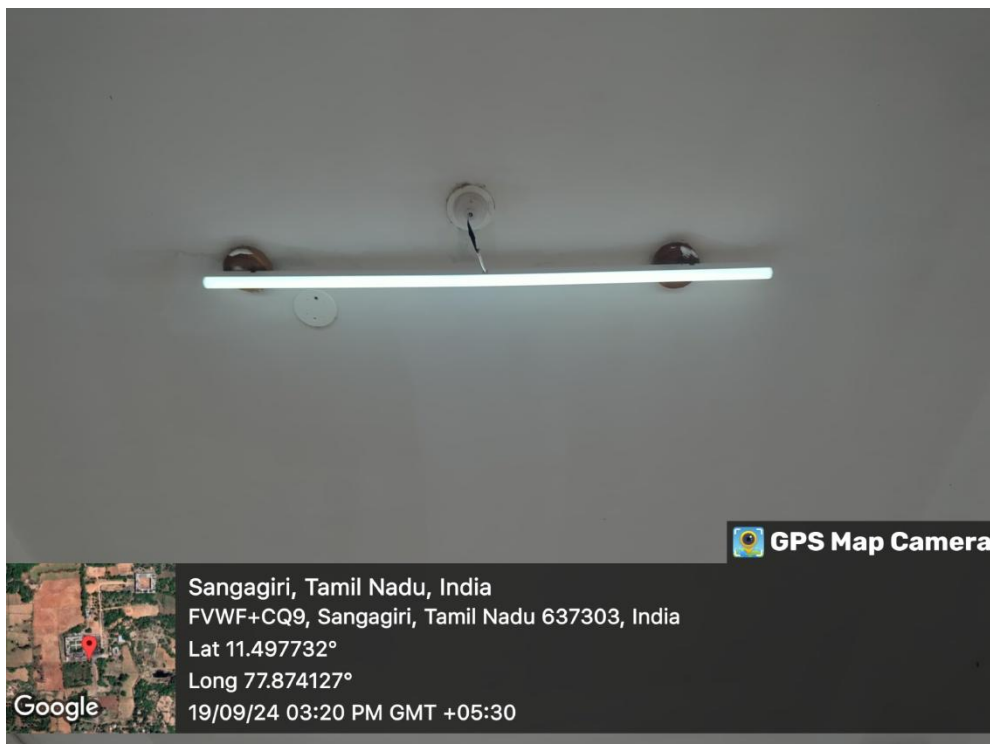
(A unit of VS Educational & Charitable Trust)

Approved by Tamilnadu Government & Pharmacy Council of India, New Delhi.
Affiliated to the Tamilnadu Dr. M.G.R. Medical University,
and The Directorate of Medical Education, Chennai.

2. LED LIGHTS FOR ENERGY EFFICIENCY

Light Emitting Diode (LED) lights offer numerous advantages for homes and businesses, including energy efficiency and enhanced light quality. LEDs use less energy compared to any other lighting options available.

A key benefit of LED lights in classrooms is their ability to boost students' academic performance, as well as enhance reading speed and concentration.



LED light usage in classroom



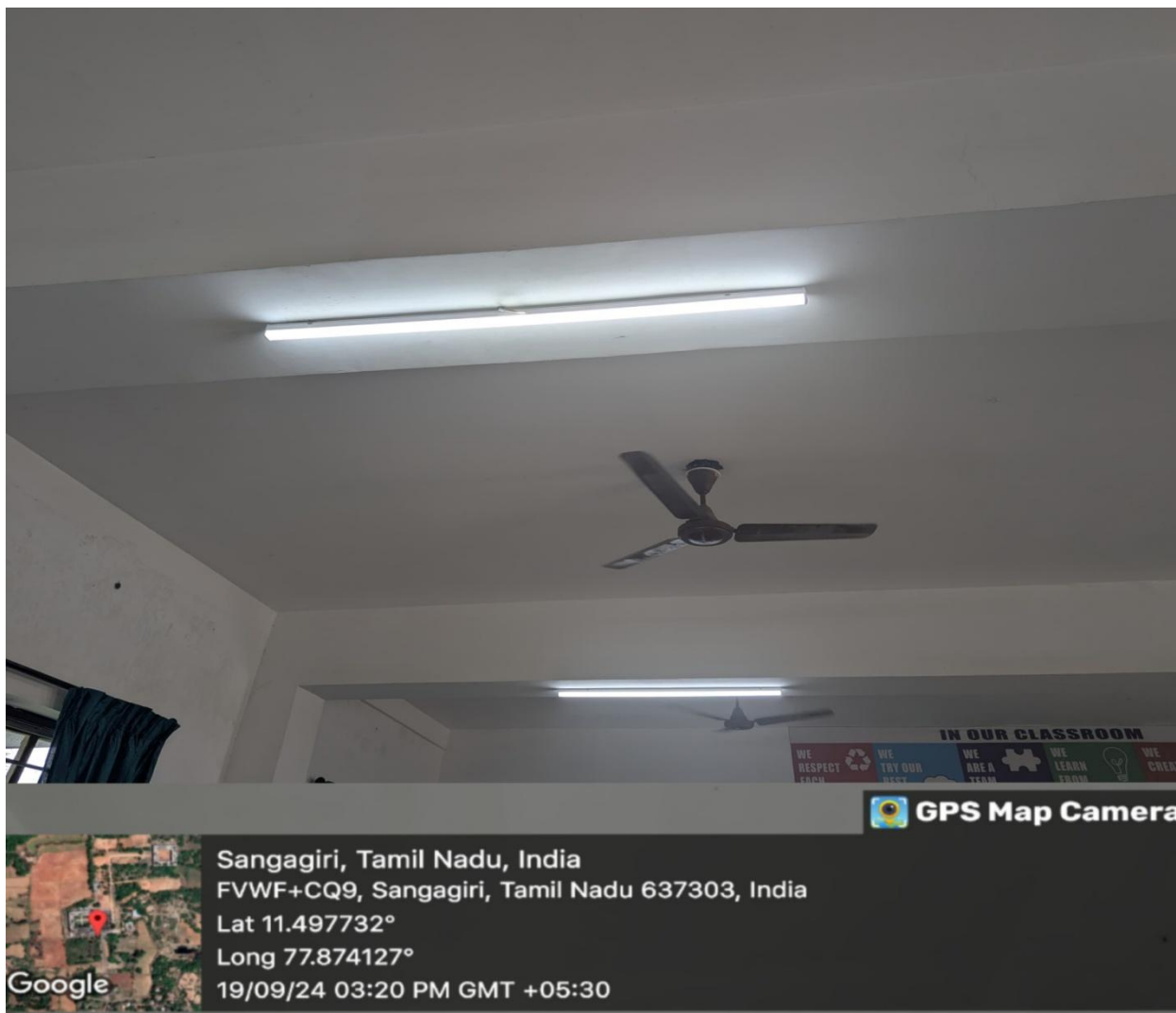
[Signature]
PRINCIPAL.
SS INSTITUTE OF PHARMACY.
KUPPANUR (PO), SANKARI (TK).
SALEM - 637301



SS INSTITUTE OF PHARMACY

(A unit of VS Educational & Charitable Trust)

Approved by Tamilnadu Government & Pharmacy Council of India, New Delhi.
Affiliated to the Tamilnadu Dr. M.G.R. Medical University,
and The Directorate of Medical Education, Chennai.



LED lights usage in classroom

[Signature]
PRINCIPAL.
SS INSTITUTE OF PHARMACY,
KUPPANUR (PO), SANKARI (TK),
SALEM - 637301



SS INSTITUTE OF PHARMACY

(A unit of VS Educational & Charitable Trust)

Approved by Tamilnadu Government & Pharmacy Council of India, New Delhi.
Affiliated to the Tamilnadu Dr. M.G.R. Medical University,
and The Directorate of Medical Education, Chennai.

3. BIOGAS

The biogas plant at SS Institute of pharmacy processes solid and liquid waste, including food scraps and vegetables from the canteen and hostel. These materials are collected daily and fed into the biogas unit. This renewable energy source is favored for its environmental benefits.



Biogas plant at hostel canteen



[Signature]
PRINCIPAL.
SS INSTITUTE OF PHARMACY,
KUPPANUR (PO), SANKARI (TK),
SALEM - 637301



SS INSTITUTE OF PHARMACY

(A unit of VS Educational & Charitable Trust)

Approved by Tamilnadu Government & Pharmacy Council of India, New Delhi.
Affiliated to the Tamilnadu Dr. M.G.R. Medical University,
and The Directorate of Medical Education, Chennai.

4. UPS BATTERY SAVER

Our SS Institute of pharmacy is utilizing a UPS power backup source, which provides automated backup electric power helps at any situation, gives uninterrupted power supply throughout energy usage.



UPS battery saver in college

[Signature]
PRINCIPAL.
SS INSTITUTE OF PHARMACY,
KUPPANUR (PO), SANKARI (TK),
SALEM - 637301



SS INSTITUTE OF PHARMACY

(A unit of VS Educational & Charitable Trust)

Approved by Tamilnadu Government & Pharmacy Council of India, New Delhi.
Affiliated to the Tamilnadu Dr. M.G.R. Medical University,
and The Directorate of Medical Education, Chennai.

4. GENERATOR SET

Our SS Institute of pharmacy is utilizing a Generator set (power backup source), which provides automated backup electric power helps at any situation, gives uninterrupted power supply during power cut.



Generator set in college



[Signature]
PRINCIPAL.
SS INSTITUTE OF PHARMACY,
KUPPANUR (PO), SANKARI (TK),
SALEM - 637301